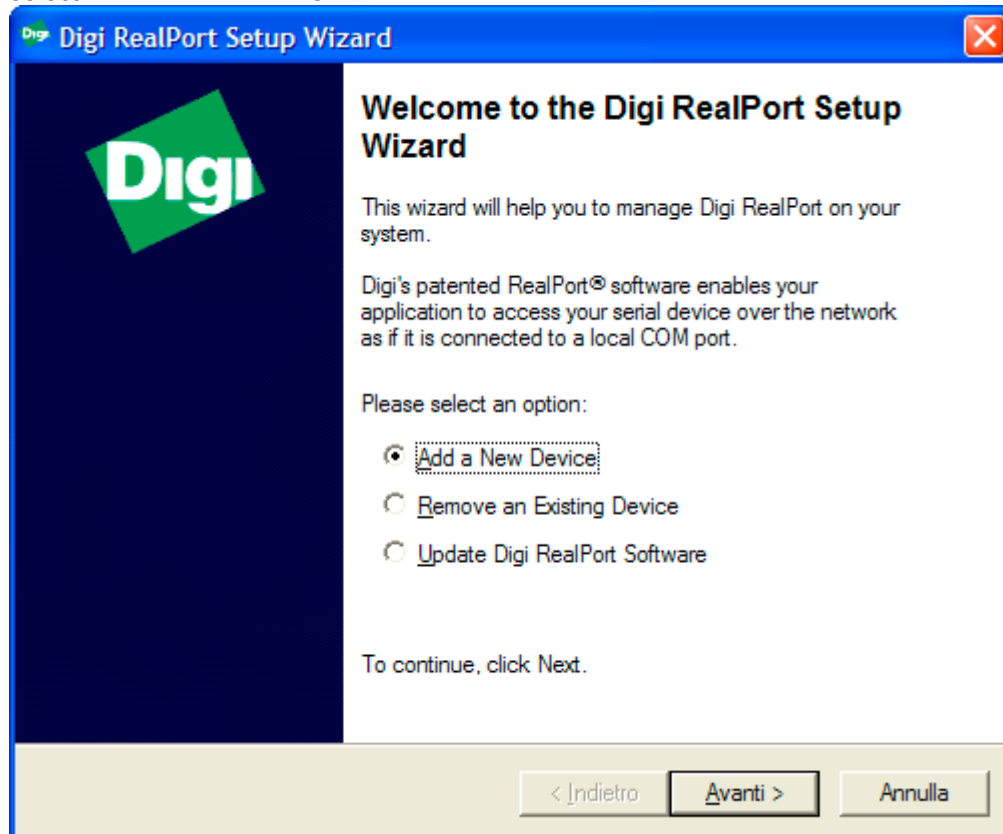
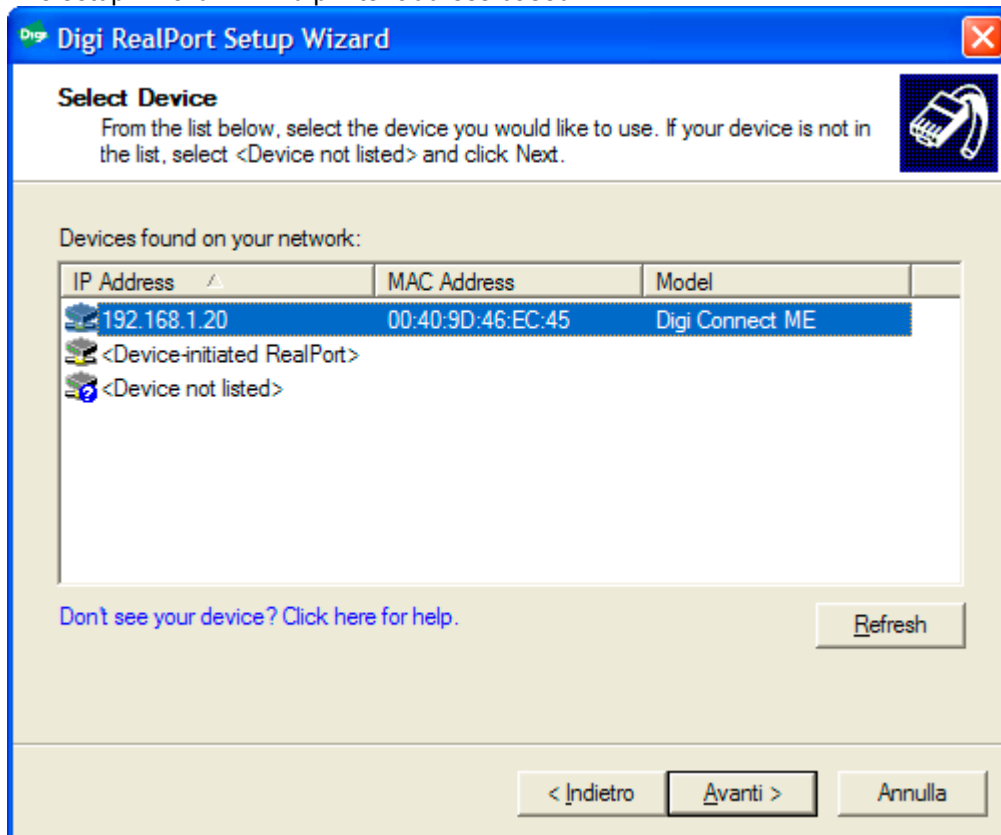


User setup for ETHERNET PORT in REALPORT mode

- unzip file DriverDIGIRealPort_40002549_E.zip
- connect your printer by ETH port to your LAN or PC
- power your printer on
- run SETUP32.EXE
- select ADD A NEW DEVICE

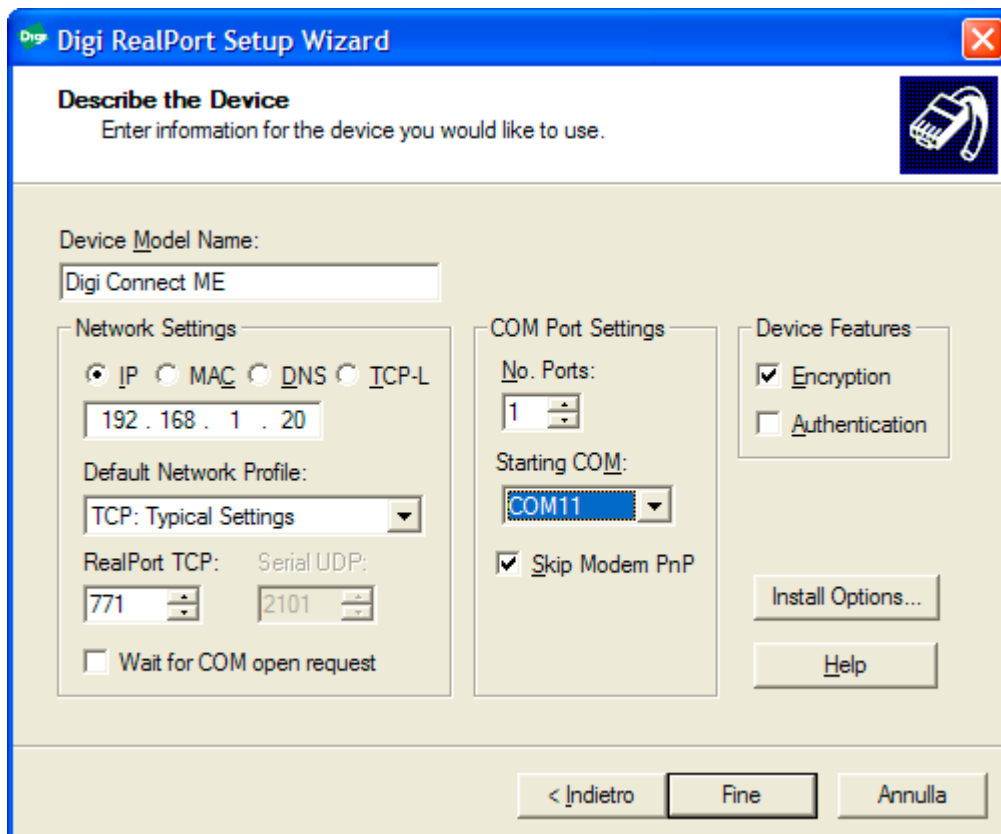


- The setup wizard will find printer address based



Select COM port number

Select options as described in the following image



- When setup is finished you can use your printer by ethernet connection using a virtual COM port addressing (i.e. COM11).
Com port parameters must be set:
BAUD RATE = 57600
PARITY = NONE
DATA BITS = 8
STOP BITS = 1

REALPORT mode is the easiest way to interface ETH printer but it is also possible to switch from REALPORT mode to TCP/IP Server mode by changing ETH interface parameters (ask to Italora support service for details – support@italora.it).